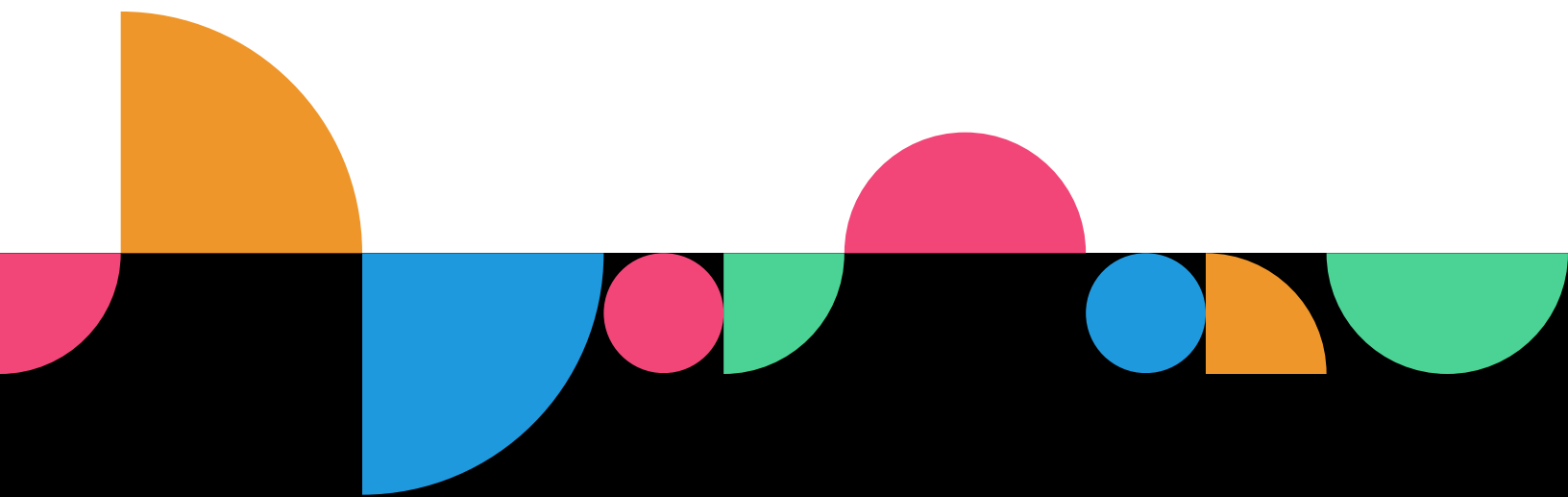




The Language Proficiency Company

Learn. Assess. Certify.



By Educators, For Educators

We understand the dedication it takes to run an effective language program because our team has been in your shoes. From classroom teachers and college professors to district supervisors and linguists, our team is comprised of language educators and learners from around the world. Our mission is to partner with educators and professionals to make that journey easier, more effective, and more impactful.

We serve organizations globally in:



Since our founding in 2001, we have:

delivered nearly 4 million language tests in over 150 languages	supported over 20,000 educators with professional learning	awarded over 38,000 Global Seals with Avant tests
---	--	---

We measure our success by the people and programs we help:



95% placement accuracy after implementing Avant STAMP tests, resulting in more engaged students, better classroom management, and higher teacher retention.



"Avant's professional development team worked overtime to craft learning sessions that were meaningful and relevant for both new and veteran teachers ... along with turnkey instructional strategies based on best practices." - Angela Sherman, Ph.D. Senior Director Bilingual Education & World Language Programs, Detroit Public Schools

Commitment to security:



SOC2 Type II Achieved
This attestation reflects rigorous independent evaluation of our information security practices.

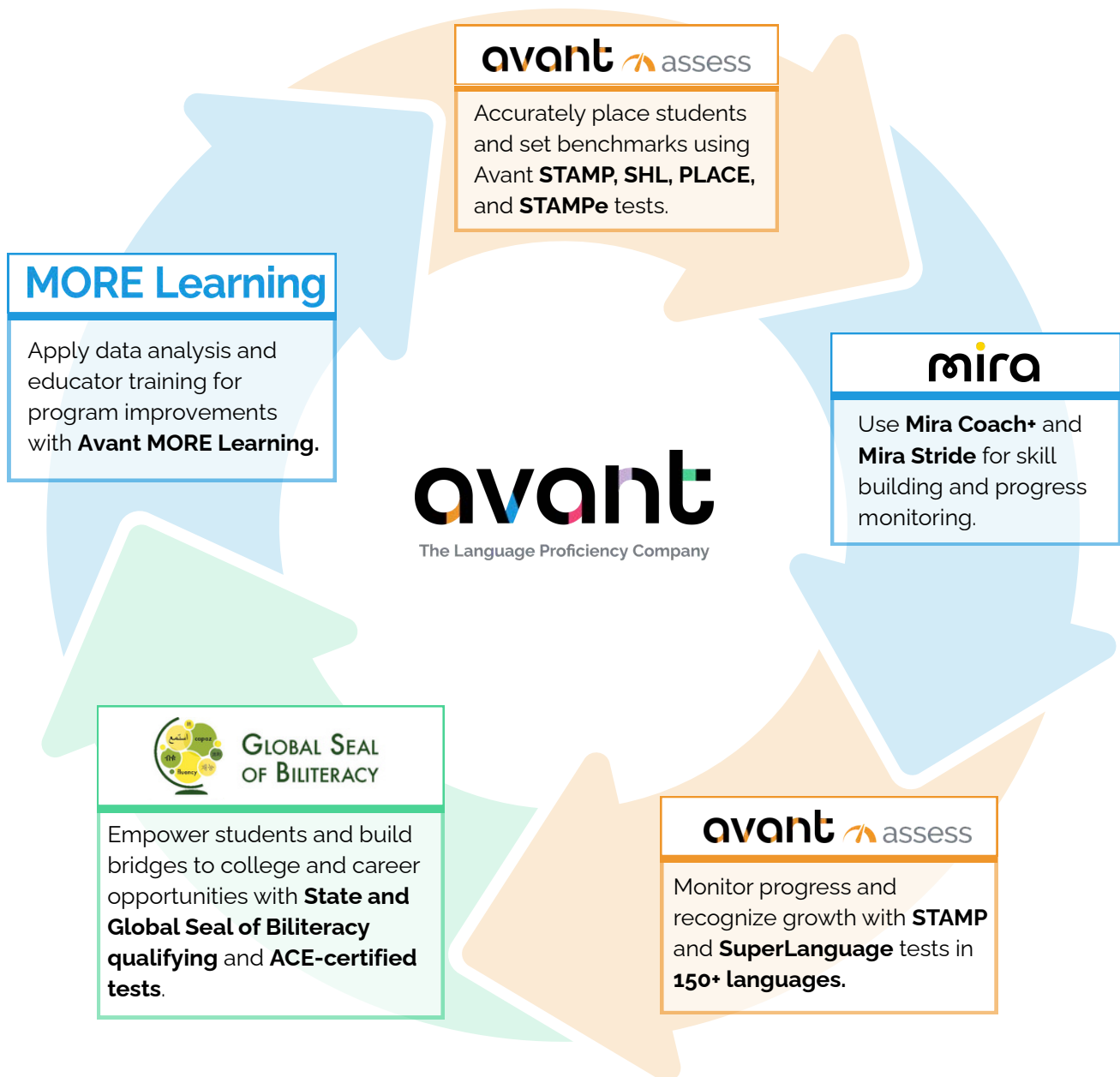


CISA Secure by Design Pledge
This is a voluntary pledge focused on enterprise software products and services, including on-premises software, cloud services, and software as a service (SaaS).

Complete Support

The Avant Language Proficiency Platform

Avant offers a comprehensive suite of solutions, including language proficiency testing, AI-powered language learning and progress monitoring, professional learning for educators, and credentialing. We support the entire language learning journey for any program type.



Learn. Assess. Certify.

Test



With Accuracy and Reliability

Having established the world's first online language proficiency assessment over two decades ago, Avant still delivers the STAndards-based Measurement of Proficiency (STAMP) and other assessment solutions in 150+ languages to K-12 and adult language learners. Avant applies rigorous standards and rating quality checks to achieve a high degree of accuracy and reliability. We can help you select assessments tailored to your program's specific needs and testing purposes.



STAMP 4S
4-skills assessment for teenagers and adults



STAMP 4Se
4-skills assessment for ages 12 and below



STAMP WS
2-skills assessment for teenagers and adults



STAMP WSe
2-skills assessment for ages 12 and below



STAMP for CEFR
4-skills language assessment aligned to CEFR



STAMP Pro
4-skills assessment for professionals and businesses



STAMP Monolingual
4-skills assessment with instructions in testing language



STAMP Medical
4-skills assessment for the medical field



STAMP for ASL
2-skills American Sign Language assessment



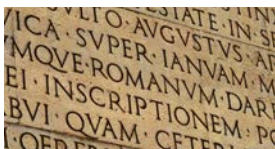
PLACE
Language Placement Test for teenagers and adults



APT
Modern Standard Arabic proficiency test for native speakers



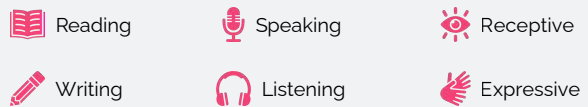
SHL
Spanish Heritage Language Test for heritage programs



STAMP for Latin
1-skill Latin assessment



Avant SuperLanguage
2-skill assessment of Super Less Commonly Tested Languages



Avant STAMP



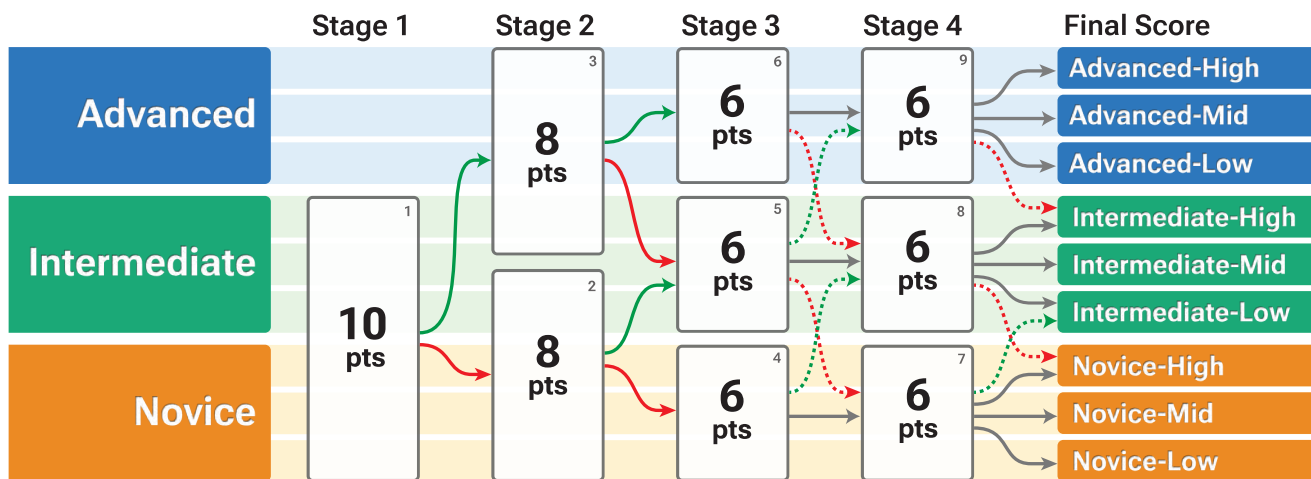
Proprietary Computer-Adaptive Technology

How does STAMP individualize assessment for each student?

Avant STAMP dynamically adjusts the difficulty of test questions based on the test taker's responses. On fixed-form tests, every student answers the same questions, and teachers have to choose the test difficulty. With Avant, test takers rarely encounter items that are too easy or too difficult, and eliminates potential pre-selection bias.

Multi-Stage Adaptive Test Design

The multi-stage adaptive test design evaluates test takers with higher precision and less fatigue.



The Avant STAMP starts with a series of questions at the Intermediate level in Reading and Listening. Based on the test taker's answers, they are routed to more advanced or novice questions.

The difficulty of Writing and Speaking prompts is determined by the proficiency level achieved in Reading and Listening, respectively. Two-skill assessments use CAN-DO statement self-evaluations to determine the Writing and Speaking prompt levels.

Why choose computer-adaptive vs. fixed-form testing?

Precision and Efficiency

- Adaptive questioning
- Accurate measurement

Enhanced Test Taker Experience

- Reduced test anxiety
- Shorter testing time

Data-Driven Insights

- Real-time feedback
- Detailed reporting

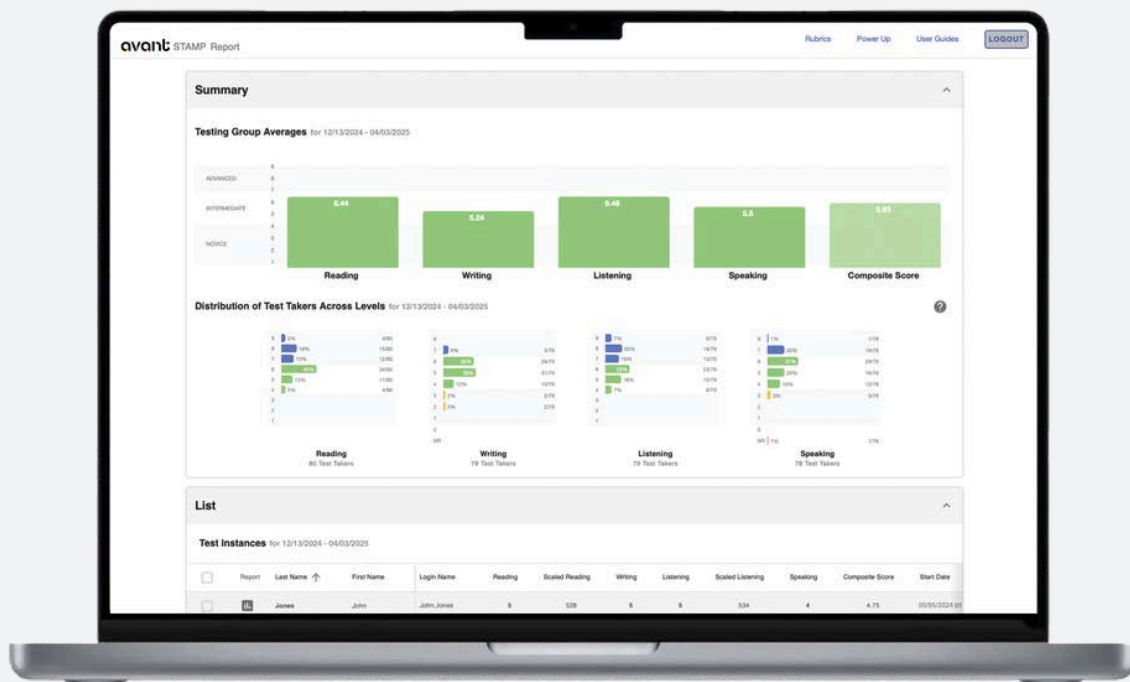
Visit avantassessment.com/sample-tests for examples of test questions and prompts.

Report

With Validity and Accountability

Informed Decision Making

- Access all results online in a single dashboard
- Perform detailed longitudinal analysis
- Identify growth areas and personalize instruction
- Inform individual student, class, and program goals and benchmarks
- Discover professional learning needs
- Demonstrate program quality



Personalized Learning

This one-page report provided after completing the STAMP test is packed with information, providing insights into a test taker's performance in each skill assessed as well as providing recommendations to "Power Up" language proficiency to the next level.

Testing in English is available on both the CEFR and US national standard scales.

Avant MORE Learning provides custom data analysis, dashboards, and consulting based on your data to help you inform instruction and articulate program goals!

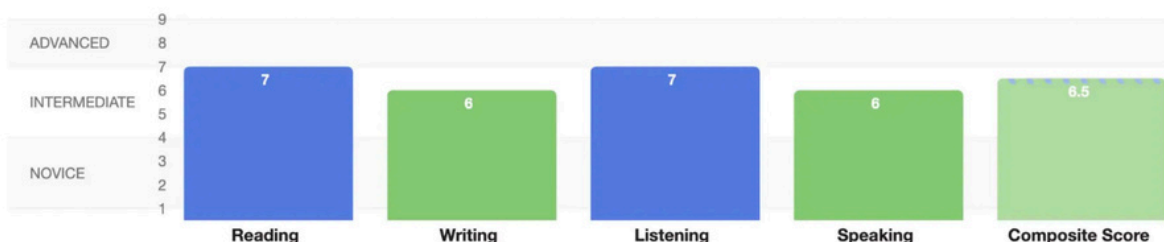
Avery Costello

District | School

Login Name: avery.costello@unrealschool.com

Language: Spanish

Start Date: June 03, 2025



READING	LEVEL DESCRIPTION	SUGGESTIONS
<p>7 ADVANCED LOW</p> 	<p>At this level, learners are able to:</p> <ul style="list-style-type: none"> understand narratives and reports concerned with issues in which the writers adopt particular attitudes or viewpoints. understand the subtleties of texts on familiar topics and information from texts on unfamiliar topics. 	<p>Suggestions to 'Power Up' to the next level:</p> <ul style="list-style-type: none"> practice reading a variety of extended texts such as complex narratives, speeches, and poetry with author intended inferences and nuance. *Latin: focus on reading poetry, extended dialogues, and classical literature. focus on building depth of vocabulary by studying and learning multiple senses of words, including homonyms and synonyms.
<p>6 INTERMEDIATE HIGH</p> 	<p>At this level, learners are able to:</p> <ul style="list-style-type: none"> write clear, detailed, extended texts on a wide range of subjects related to personal interests. create texts that show good control of the language, using a variety of transition and linking words and strategies. show increased grammatical accuracy and vocabulary depth and breadth in texts. 	<p>Suggestions to 'Power Up' to the next level:</p> <ul style="list-style-type: none"> focus on increasing the amount of language that you produce, using a variety of complex sentences with both added details and less common vocabulary. focus on creating cohesion and natural flow in your writing, with clear and smooth flow from beginning, middle and end.
<p>7 ADVANCED LOW</p> 	<p>At this level, learners are able to:</p> <ul style="list-style-type: none"> understand reports concerned with contemporary problems in which the speaker or presenter shares particular attitudes or viewpoints. understand some extended presentations on unfamiliar topics delivered through various media sources. 	<p>Suggestions to 'Power Up' to the next level:</p> <ul style="list-style-type: none"> practice listening to longer, more detailed audio passages such as news reports, audio books and reviews with critical opinions. use focused listening to identify personal opinion and critical analysis of stories/situations and to identify idiomatic and nuanced use of language.
<p>6 INTERMEDIATE HIGH</p> 	<p>At this level, learners are able to:</p> <ul style="list-style-type: none"> create clear, detailed, extended speeches and presentations on a wide range of subjects. create language that shows good control of the language, using a variety of transition and linking words and strategies. show increased grammatical accuracy and vocabulary depth and breadth in language, with natural flow and speed. 	<p>Suggestions to 'Power Up' to the next level:</p> <ul style="list-style-type: none"> focus on increasing the amount of language that you produce, including a variety of complex sentences, added details and idiomatic language. focus on creating cohesion and natural flow in your speaking, with clear and smooth flow from beginning, middle and end.

Avant MORE



Professional Learning

With 70+ years of combined experience in language teaching, administration, research, and consulting, our team helps you uncover information in the gold mine of your testing data to answer questions like:

“How do we prove our program is effective?”

“How do more students earn the Seal of Biliteracy?”

“How can we align our teachers around clear proficiency goals?”

From turnkey independent courses to fully customized district coaching, our work meets you where you are — regardless of program size, budget, or model.



Data Analysis

Testing is the backbone— analysis turns it into progress. AML Data Analysis has helped our partners:

- Set realistic growth targets
- Strengthen curriculum alignment and program pathways
- Build internal capacity for ongoing data use
- Move from isolated test results to long term program insights



Custom Consulting

No two language programs are the same. Your professional learning shouldn't be either. We work directly with districts and institutions to design professional learning around your program, your data, and your goals.



Online Courses

Designed to support immediate classroom impact, our most popular course is **Avant ADVANCE**, which answers the common question “What proficiency level are my students actually demonstrating?” All of our courses are eligible for PDUs and we regularly expand topics based on educator need.

Mira



AI-Driven Language Learning Partner

Language learning is all about connection. Mira keeps human communication at the heart of every lesson. With AI-powered coaching, immersive simulations, and vibrant virtual communities, Mira makes practice feel real and meaningful for students, and gives clarity and ease to teachers.

Mira Coach +

Put a Personal Tutor in the Pocket of Every Learner

In most classrooms, students only get a few minutes a week of real speaking time. Mira Coach+ changes that.

Mira Coach+ is an AI-powered personalized language coach that accelerates speaking proficiency for language learners, lightens teachers' loads with real-time insights, and helps learners build confidence—fast.

With Mira Coach+, learners practice real-world conversations, tailored to their skill level – from simple, everyday exchanges to more advanced, nuanced interactions.



Mira Stride

No more outdated test scores. No more guesswork.

The first AI-automated progress monitoring system for English learners to help schools identify gaps, track growth, and reclassify students confidently.

- High-frequency, low-stakes tasks that help learners progress
- Educator dashboard shows robust, real-time, individualized reports
- Automated scoring, task difficulty adjustment, and actionable recommendations

Contextualized tasks are aligned to state and national standards and use academic language in topics such as science, social studies, and other core subjects.

Certify



Endorsements for Higher Education and Careers

Award the Global Seal of Biliteracy

The Global Seal of Biliteracy is a free, digitally shareable credential that has been issued in 68+ countries to 67,000+ awardees by schools, universities, and employers. All Avant tests are Global Seal qualifying tests.



The Global Seal of Biliteracy enables recipients to showcase their language skills to any school or employer across international borders with a unique serial-numbered document.

Learn more at theglobalseal.com.

Increase Parent Engagement:

After implementing the Global Seal of Biliteracy pathway awards, the Arlington Independent School District in Texas, which supports over 53,000 students across 80 campuses, saw an increase in parent engagement and student pride for language learning.

"We did a big ceremony at our Center for Visual and Performing Arts with performances. Parents were very excited."

- Dr. Ruth Martin, Lead Specialist, Arlington ISD

Read the case study:
avantassessment.com/case-study/arlington-isd

Teacher Certification

Join the Illinois, Maine, Minnesota, and Washington Departments of Education as well as Portland State University in awarding educator endorsements and bilingual teacher pathway programs through Avant STAMP testing and Global Seal certification.



The Washington State
BOARD OF EDUCATION



Illinois
State Board of
Education

Build Pathways



Award Credit and Recognize Skills



Credit by Exam

Create opportunities for language learners to receive recognition for their skills learned in or out of the classroom. Avant's assessments are used to award credit by exam at the secondary and post-secondary levels.

State Seals of Biliteracy

Celebrate your learners' language skills with State Seals of Biliteracy. Avant STAMP tests qualify in all 50 states and the District of Columbia.



College Credit

Inspire learners to continue their language acquisition journey by giving them a head start toward a college minor or major. Avant STAMP 4S, WS, ASL, APT, and SuperLanguage tests are recommended for college credit by the American Council on Education (ACE). It is eligible for **4 to 16 university credits** based on proficiency level.

Proficiency Level	ACE Credit Recommendation
Novice-High (STAMP Level 3)	4
Intermediate-Low (STAMP Level 4)	6
Intermediate-Mid (STAMP Level 5)	8
Intermediate-High (STAMP Level 6)	12
Advanced-Low (STAMP Level 7)	14
Advanced-Mid (STAMP Level 8)	16

You're in Good Company



Exclusive Member Benefits



Language insights don't stop here.

Sign up for our mailing list to stay up to date!



avantassessment.com

@avantassessment



Avant offers robust language proficiency assessments in more than 150 languages, delivering comprehensive reports that provide valuable data and insights for both administrators and test takers. Avant assessments are recommended for college credit by the **American Council on Education (ACE)**. They are also used to attain prestigious certifications such as **State and Global Seals of Biliteracy**, recognized by academic and professional organizations worldwide. Avant's assessments utilize computer-adaptive, online formats, which can be administered in classrooms or remotely via **AvantProctor**.

Language Assessments Offered by Avant

STAMP 4S (Reading, Writing, Listening, Speaking)

- | | | | |
|-----------------------------|-------------|----------------------------|-------------------------|
| 1. Arabic (Modern Standard) | 5. German | 10. Korean | 15. Russian |
| 2. English | 6. Hebrew | 11. Mandarin (Simplified) | 16. Spanish |
| 3. English for CEFR | 7. Hindi | 12. Mandarin (Traditional) | 17. Spanish Monolingual |
| 4. French | 8. Italian | 13. Polish | |
| | 9. Japanese | 14. Portuguese (Brazilian) | |

STAMP 4Se for Elementary (Reading, Writing, Listening, Speaking)

- | | | | |
|-----------------------------|------------------------------|----------------------------|-------------|
| 1. Arabic (Modern Standard) | 5. German | 9. Korean | 13. Russian |
| 2. Cantonese | 6. Hawaiian ('Ōlelo Hawai'i) | 10. Mandarin (Simplified) | 14. Spanish |
| 3. English | 7. Hebrew | 11. Mandarin (Traditional) | 15. Yup'ik |
| 4. French | 8. Japanese | 12. Portuguese (Brazilian) | |

STAMP for ASL (Receptive, Expressive)

STAMP for Latin (Reading)

Spanish Heritage Language (SHL)

Arabic Proficiency Test (APT)

STAMP Pro (Reading, Writing, Listening, Speaking)

- | | | | |
|-----------------------------|-------------|----------------------------|---------------------|
| 1. Arabic (Modern Standard) | 5. Hebrew | 10. Mandarin (Simplified) | 14. Russian |
| 2. English | 6. Hindi | 11. Mandarin (Traditional) | 15. Spanish |
| 3. French | 7. Italian | 12. Polish | 16. Spanish Medical |
| 4. German | 8. Japanese | 13. Portuguese (Brazilian) | |
| | 9. Korean | | |

PLACE

- | | | |
|-----------------------------|-------------|---------------------------|
| 1. Arabic (Modern Standard) | 3. German | 6. Mandarin (Simplified) |
| 2. French | 4. Italian | 7. Mandarin (Traditional) |
| | 5. Japanese | 8. Spanish |

STAMP WS (Writing and Speaking)

- | | | | |
|-----------------------------|-------------------------------|----------------------|----------------|
| 1. Amharic | 10. Greek | 19. Nepali | 29. Thai |
| 2. Armenian | 11. Haitian Creole | 20. Pashto | 30. Tigrinya |
| 3. Bengali | 12. Hawaiian ('Ōlelo Hawai'i) | 21. Persian-Farsi | 31. Turkish |
| 4. Cabo Verdean | 13. Hmong | 22. Punjabi | 32. Ukrainian |
| 5. Chaldean (Speaking only) | 14. Ilocano | 23. Samoan | 33. Urdu |
| 6. Chin (Hakha) | 15. Kannada | 24. Somali Maay Maay | 34. Vietnamese |
| 7. Chuukese | 16. Khmer | 25. Somali Maxaa | 35. Yoruba |
| 8. Czech | 17. Marathi | 26. Swahili | 36. Yup'ik |
| 9. Filipino (Tagalog) | 18. Marshallese | 27. Tamil | 37. Zomi |
| | | 28. Telugu | |

STAMP WSe for Elementary (Writing and Speaking)

- | | | |
|-------------|-------------|---------------|
| 1. Armenian | 2. Ukranian | 3. Vietnamese |
|-------------|-------------|---------------|

Avant SuperLanguage Tests (Writing and Speaking)

- | | | | |
|--------------------------|----------------------------|--------------------------------|-------------------------|
| 1. Abkhazian* | 26. Danish | 51. K'iche' | 76. Pangasinan |
| 2. Afaan Oromo | 27. Dari | 52. Kikuyu | 77. Pohnpeian |
| 3. Albanian | 28. Dinka | 53. Kinyarwanda (Kinyamulenge) | 78. Q'anjob'al |
| 4. Arabic – Algerian | 29. Dutch | 54. Kirundi | 79. Romanian |
| 5. Arabic – Arab Gulf | 30. Dyula | 55. Kosraean | 80. Saho |
| 6. Arabic – Egyptian | 31. Estonian | 56. Krio | 81. Sanskrit |
| 7. Arabic – Iraqi | 32. Ewe | 57. Kunama | 82. Shona |
| 8. Arabic – Jordanian | 33. Fiji Hindi | 58. Lao | 83. Sinhala (Sinhalese) |
| 9. Arabic – Lebanese | 34. Fijian | 59. Latvian | 84. Soninke |
| 10. Arabic – Libyan | 35. Fulani | 60. Lingala | 85. Swazi (siSwati) |
| 11. Arabic – Moroccan | 36. Georgian | 61. Lisan ud-Dawat | 86. Swedish |
| 12. Arabic – Palestinian | 37. Gujarati | 62. Lithuanian | 87. Sylheti |
| 13. Arabic – Sudanese | 38. Hausa | 63. Luganda (Ganda) | 88. Tatar |
| 14. Arabic – Syrian | 39. Hawai'i Creole | 64. Malay | 89. Tibetan (Bod-skad) |
| 15. Arabic – Tunisian | 40. Herero (Otjiherero) | 65. Malayalam | 90. Tok Pisin |
| 16. Arabic – Yemeni | 41. Hungarian | 66. Mandinka (Mandingo) | 91. Tongan |
| 17. Bambara (Bamanakan) | 42. Icelandic | 67. Mixtec | 92. Twi |
| 18. Bikol | 43. Igbo | 68. Mongolian | 93. Uzbek |
| 19. Bosnian | 44. Ilonggo (Hiligaynon) | 69. Mortlockese | 94. Visayan (Bisaya) |
| 20. Burmese* | 45. Indonesian | 70. Norwegian- Bokmal | 95. Waray-Waray |
| 21. Cantonese | 46. Jamaican Patwah | 71. Norwegian- Nynorsk | 96. Wolof |
| 22. Catalan | 47. Jingpho (Kachin)* | 72. Nuer | 97. Yapese |
| 23. Cebuano | 48. Kankanaey | 73. Nyanja (Chichewa) | 98. Zigula |
| 24. Chäm | 49. Kapampangan (Pampango) | 74. Odia (Oriya) | |
| 25. CHamuro (Chamorro) | 50. Karen* | 75. Palauan (Palall) | |

*Abkhazian, Burmese, Karen, and Jingpho (Kachin) are temporarily unavailable.